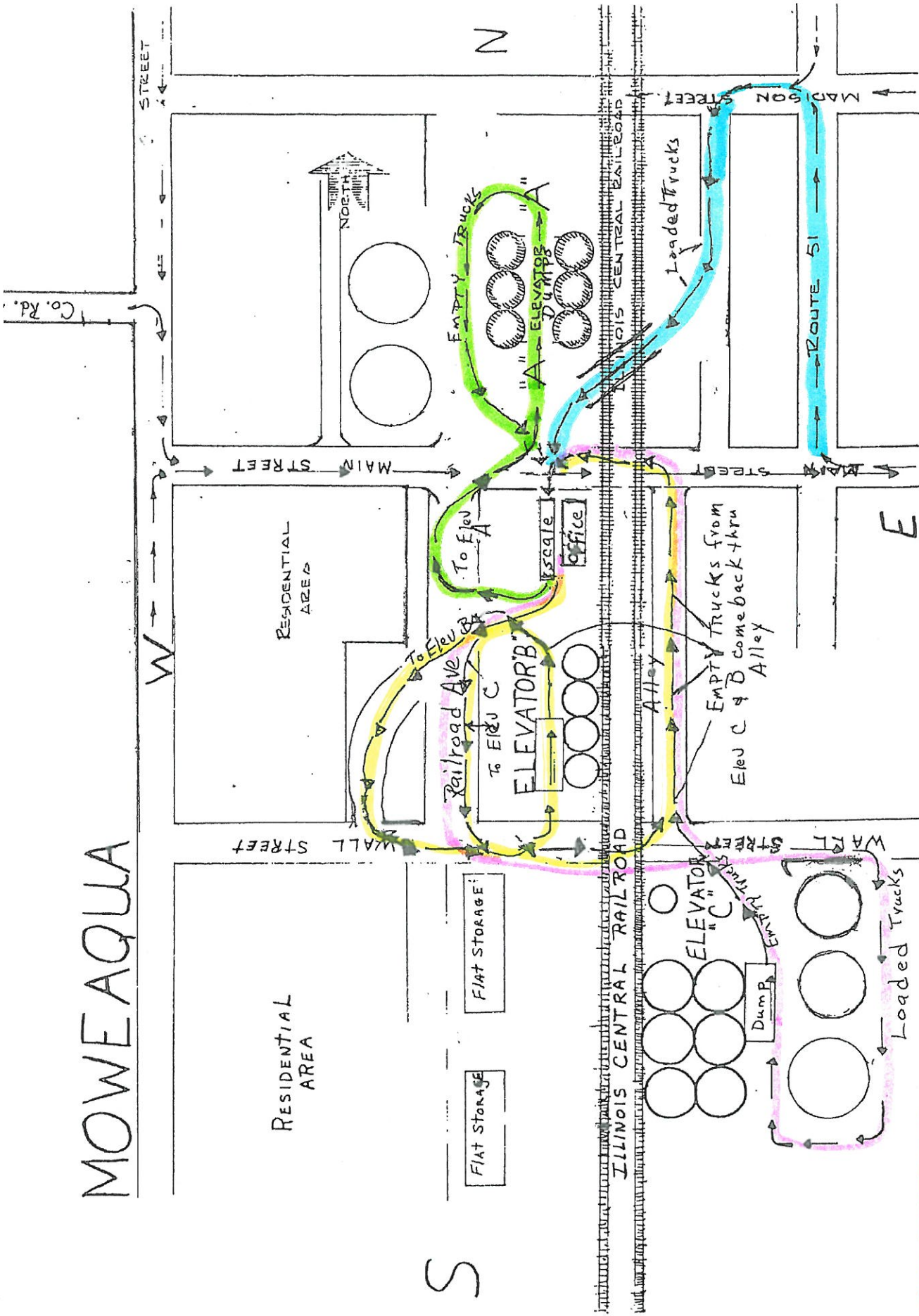


MOWEAQUA



Elevator A

Elevator B

Elevator C

Inbound loads entering town from the west follow Main St. east to N. Main turn left, go one block turn left, left again into alley before Railroad tracks. Proceed to angle crossing over tracks staying as far left as possible. Inbound loads from the east follow E. Main St. to N. Main, turn right, go one block, turn left on Madison St., turn left into alley before Railroad tracks. Proceed to angle crossing over tracks to the scales crossing W. Main St. to scales. From scales follow arrows to each Elevator as indicated. Empty trucks will follow map as indicated by arrows marked empty trucks back to the scales. Please ask for help if you have questions.